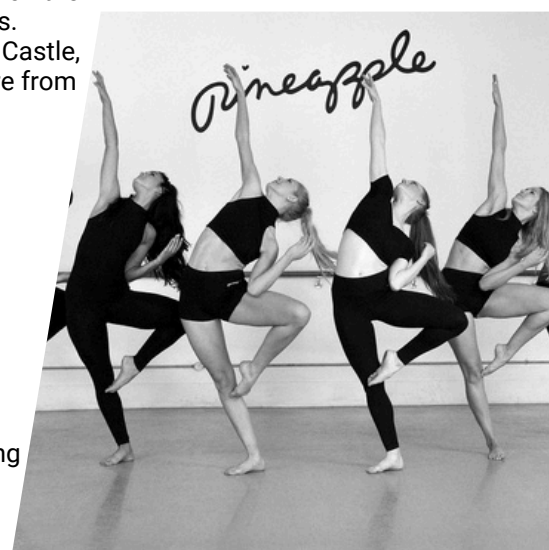
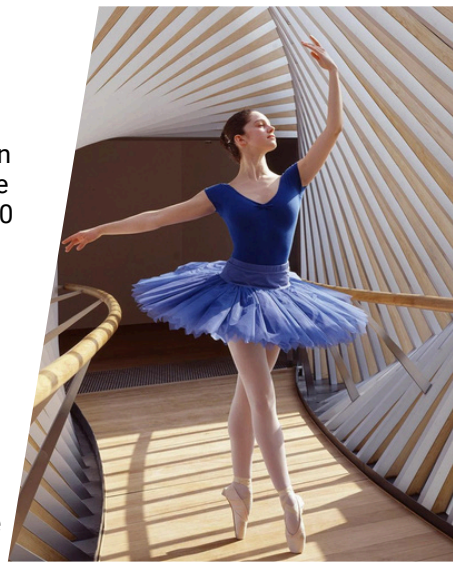


Sample Itinerary

LONDON & PARIS 13 NIGHTS



DAY 1 AUSTRALIA TO LONDON
Meet your DATW Tour Director at the Airport for check in. On arrival in London, your Tour Director will be on hand to assist you through Passport Control, Customs and Baggage Claim. Overnight flight

DAY 2 ARRIVE LONDON
Arrive London early morning. Met on arrival and transferred to your Hotel. Your room will be available on arrival. Breakfast at hotel. Remainder of the day at leisure 5 day London Travel card 1-2 zones Central London included for transportation on the London underground and buses.
7 night's accommodation including Breakfast

DAY 3 SIGHTSEEING
Breakfast at the hotel.
Meet your guide this morning at the hotel for your Full Day London sightseeing tour. During your tour see Big Ben, the Houses of Parliament, Westminster Abbey, the London Eye, Buckingham Palace and Piccadilly Circus. You will visit Westminster Abbey and the Tower of London which has been an integral part of British Royal History for nearly 1000 years. Entrance fees included to Westminster Abbey and Tower of London.

DAY 4 PINEAPPLE STUDIOS, BACKSTAGE TOUR OF A WEST END SHOW & THEATRE SHOW
Breakfast at the hotel
2 x 1 hour classes at Pineapple Studios. Afternoon backstage tour of a popular London West End Show and Evening Theatre Show – admission included and return coach transfers.

DAY 5 FREE DAY
Breakfast at the hotel
Today is at leisure to explore this wonderful city with your London Travel Card. Visit the Changing of the Guards at Buckingham Palace, the British Museum, take a ride on the London Eye, visit the shopping area of Oxford St or take a cruise on the Thames. Full day tours available include Windsor & Hampton Court, Canterbury & Leeds Castle, Oxford & Stratford, Bath & Stonehenge – these can be booked prior to departure from Australia. The Half Price Ticket Booth in Leicester Square offers great deals on Show tickets. Maps will be available.

DAY 6 PINEAPPLE STUDIOS & MUSICAL THEATRE WORKSHOP
Breakfast at the hotel .
Take 2 x 1 hour classes including a Musical Theatre workshop at Pineapple Studios one of the world's premiere dance centres, offering a wide variety of classes at all levels.

DAY 7 ROYAL ALBERT HALL AND ROYAL BALLET SCHOOL
Breakfast at the hotel.
Q&A with staff from White Lodge and the Upper School Royal Ballet School to hear the qualities they look for in a dancer, role of the pianist & their own training and experience in the Dance Industry. Visit the Royal Albert Hall for a Tour.

DAY 8 LONDON TO PARIS DISNEYLAND
Breakfast at the hotel .
Board the Eurostar train to Paris. Transfer on arrival to Paris Disneyland area.
3 night's accommodation including Breakfast



FOLLOW US ON SOCIAL MEDIA



CONTACT US

02 9618 6600
www.dancearoundtheworld.com.au
groups@dancearoundtheworld.com.au

Sample Itinerary Continued

LONDON & PARIS 13 NIGHTS

DAY 9 DISNEYLAND PARIS, PERFORMANCE & DISNEY PERFORMING ARTS WORKSHOP

Breakfast at the hotel
2 day admission ticket for the 2 Theme Parks at Disney Paris.
Magic Music Days performance during the day and workshop.

DAY 10 DISNEYLAND PARIS

Breakfast at the hotel.
Enjoy your day at the Theme Parks!

DAY 11 DISNEYLAND PARIS TO PARIS WITH SEINE CRUISE

Breakfast at the hotel
Transfer to Paris with a Seine cruise before arriving at your Hotel.
3 night's accommodation including Breakfast

DAY 12 SIGHTSEEING & MOULIN ROUGE

Breakfast at the hotel
Full day sightseeing today will include the Place de la Concorde and Champs-Elysees and stop at the Louvre. We will also see the Eiffel Tower and Notre Dame.
Optional tour to the Moulin Rouge this evening

DAY 13 FREE DAY & FAREWELL DINNER

Breakfast at the hotel.
Today is at leisure for you to explore Paris. We have included a 1 day Paris Travel Card to use the Metro underground system. Visit the Montmartre area of Paris that was once a mecca for artists, writers & poets, explore the cobbled streets and stop at the beautiful Sacre Coeur. There are many full day tours also available to Reims & Champagne, Normandy, Chateau Country, the Versailles Apartments and Giverny – Monet's Home. These can all be pre-booked .
Our farewell dinner this evening will be at a local restaurant

DAY 14 PARIS TO AUSTRALIA

Breakfast at the Hotel Our tour comes to an end this morning.
Tour ends on checkout at the hotel is 10am

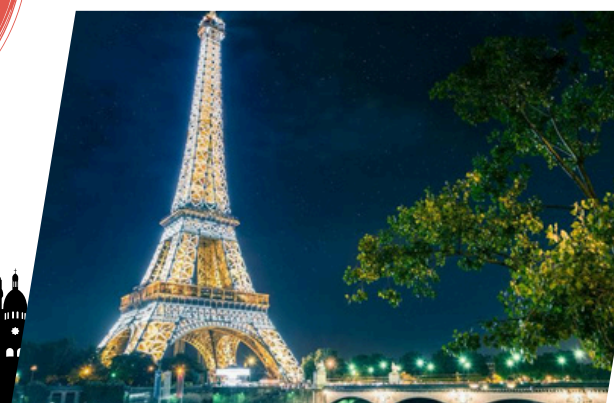
DAY 15 Cross the International Dateline

DAY 16 ARRIVE AUSTRALIA

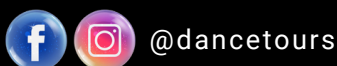
PACKAGE OPTIONS:

- LAND & AIR
- LAND ONLY - Book your own flights.

Families can
change their return
flights home to
extend their stay
after the tour.
Additional charges apply.



FOLLOW US ON SOCIAL MEDIA



CONTACT US

02 9618 6600

www.dancearoundtheworld.com.au
groups@dancearoundtheworld.com.au